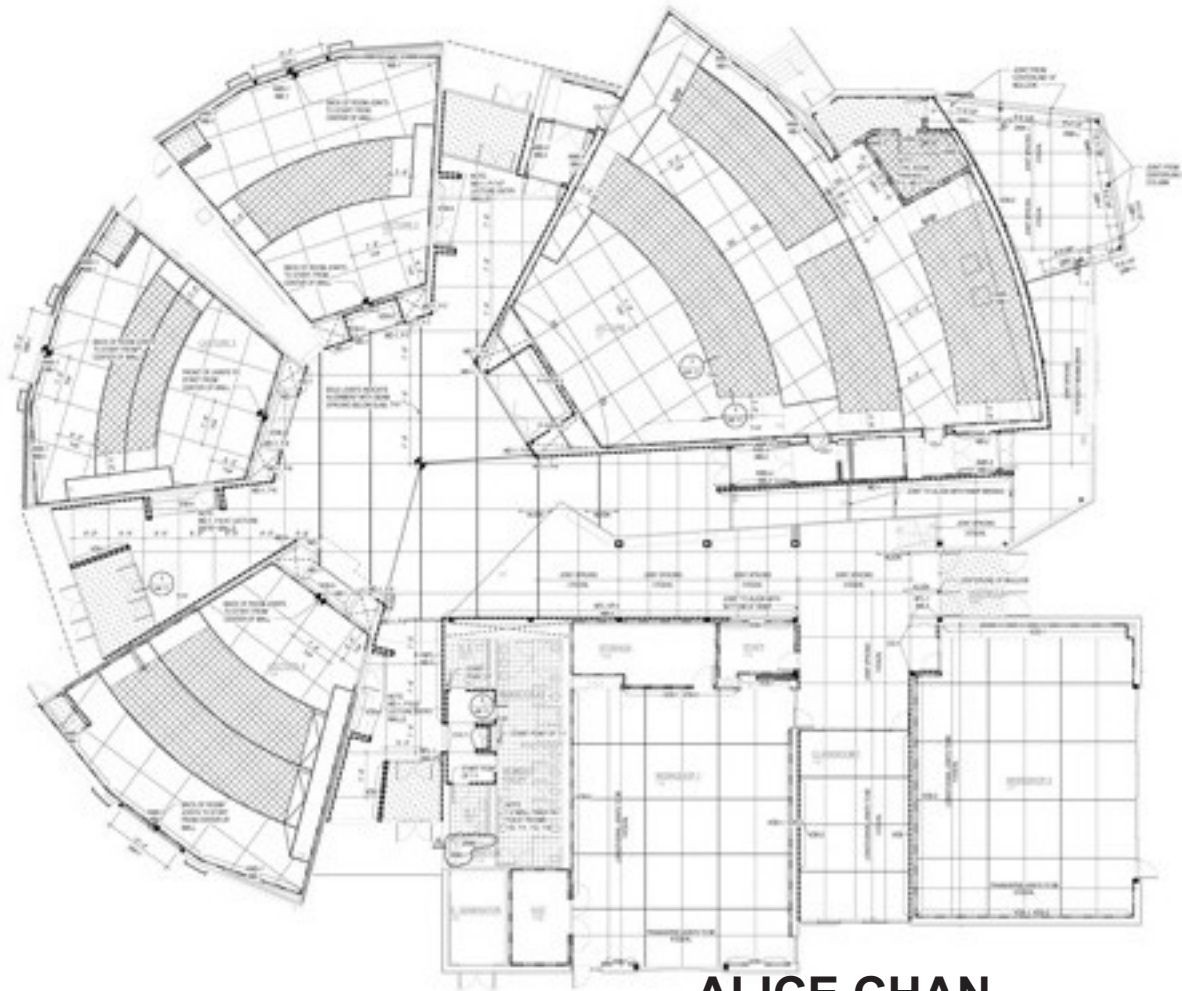


FINISH PLAN GENERAL NOTES AND LEGEND

- 1. FINISH PLAN GENERAL NOTES AND LEGEND
- 2. FINISH PLAN GENERAL NOTES AND LEGEND
- 3. FINISH PLAN GENERAL NOTES AND LEGEND
- 4. FINISH PLAN GENERAL NOTES AND LEGEND
- 5. FINISH PLAN GENERAL NOTES AND LEGEND

[Pattern]	01
[Pattern]	02
[Pattern]	03
[Pattern]	04
[Pattern]	05
[Pattern]	06
[Pattern]	07
[Pattern]	08
[Pattern]	09
[Pattern]	10
[Pattern]	11
[Pattern]	12
[Pattern]	13
[Pattern]	14
[Pattern]	15
[Pattern]	16
[Pattern]	17
[Pattern]	18
[Pattern]	19
[Pattern]	20
[Pattern]	21
[Pattern]	22
[Pattern]	23
[Pattern]	24
[Pattern]	25
[Pattern]	26
[Pattern]	27
[Pattern]	28
[Pattern]	29
[Pattern]	30
[Pattern]	31
[Pattern]	32
[Pattern]	33
[Pattern]	34
[Pattern]	35
[Pattern]	36
[Pattern]	37
[Pattern]	38
[Pattern]	39
[Pattern]	40
[Pattern]	41
[Pattern]	42
[Pattern]	43
[Pattern]	44
[Pattern]	45
[Pattern]	46
[Pattern]	47
[Pattern]	48
[Pattern]	49
[Pattern]	50



**ALICE CHAN**

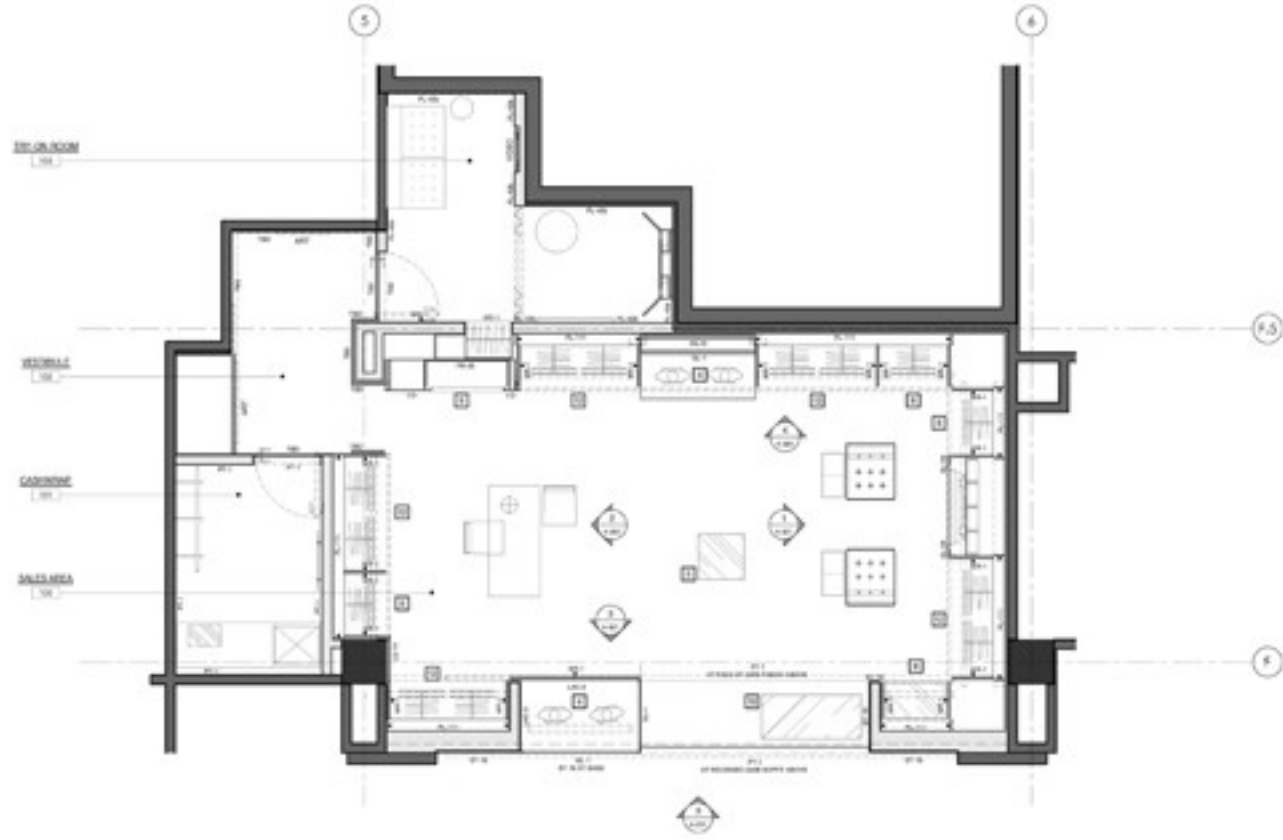
Additional work sample | Pre-conceptual, SD, DD, CD Level work | Working Files







ALICE CHAN  
Additional work sample | Nordstrom Shopping Mall in Canada



**1 MERCHANDISING, KEYING & FINISH PLAN**  
 SCALE: 1/4" = 1'-0"

FINISH LEGEND			
TAG	MATERIAL DESCRIPTION	TAG	MATERIAL DESCRIPTION
002.1	ACQUAFLUX TILE	002.2	TEMPERED LOW IRON TINTED GLASS
002.3	BIRCH AND HONEY LOOF, WOOL AND SILK CARPET	002.4	GOLD & PLATING GLASS BY HORIZONTAL PATTERNS
002.5	WHEAT CARPET, TAUPÉ, BLUE-ROOM AND HONEY LOOF FLE CARPET	002.6	WHITE LACQUER TO MATCH WHITE MIRRORING BY-16
002.6		002.7	MINI MIRROR HORIZONTAL BRASS SLABS
002.7	WHEAT CARPET, T&O	002.8	MINI T&O
002.8	BLACK ON BLACK CARBON FIBER	002.9	MINI BLACK MIRRORING WITH GRID PATTERNS
002.9	BLACK PAINT, SATIN	003.0	MINI VERY HORIZONTAL BRASS SLABS
003.0	RED WOVEN FABRIC	003.1	MINI SQUARE TEXTURAL LACQUER
003.1	AIR ELIMINATOR FABRIC AT BOTTOM SHELF OF ACCESSORIES WALL	003.2	WHIPPY LOW-POR SATIN BRASS
003.2	WHITE TEXTURED FABRIC - 8" WIDE	003.3	OIL QUENCHED STEEL
003.3	WHITE PEARLCAST FABRIC	003.4	POLISHED STAINLESS STEEL
003.4	BLACK WOMEN FABRIC FOR COFFEE JEWELRY	003.5	BLACK OPAL POWDER COAT ON STEEL OR ALUMINUM
003.5	WHITE WOMEN FABRIC FOR COFFEE JEWELRY	003.6	WHITE POWDER COAT ON STEEL OR ALUMINUM
003.6	GOLD GENT - SILVER	003.7	BRIGHT BRASS PLATING
003.7	GOLD METAL WITHIN GUM DESIGN	003.8	POLISHED BRASS
003.8	BLACK MIRRORING BY HORIZONTAL LINEAR DETAIL EVERY 8"	003.9	TEXTURED BRASS
003.9	WHITE MIRRORING BY HORIZONTAL LINEAR DETAIL EVERY 8"	004.0	PATINA TREATMENT
004.0	WHITE MIRRORING BY HORIZONTAL LINEAR DETAIL EVERY 8"	004.1	PATINA TREATMENT
004.1	BLACK MIRRORING BY HORIZONTAL LINEAR DETAIL EVERY 8"	004.2	PATINA TREATMENT
004.2	WHITE MIRRORING BY HORIZONTAL LINEAR DETAIL EVERY 8"	004.3	PATINA TREATMENT
004.3	WHITE MIRRORING BY HORIZONTAL LINEAR DETAIL EVERY 8"	004.4	PATINA TREATMENT
004.4	WHITE MIRRORING BY HORIZONTAL LINEAR DETAIL EVERY 8"	004.5	PATINA TREATMENT
004.5	WHITE MIRRORING BY HORIZONTAL LINEAR DETAIL EVERY 8"	004.6	PATINA TREATMENT
004.6	WHITE MIRRORING BY HORIZONTAL LINEAR DETAIL EVERY 8"	004.7	PATINA TREATMENT
004.7	WHITE MIRRORING BY HORIZONTAL LINEAR DETAIL EVERY 8"	004.8	PATINA TREATMENT
004.8	WHITE MIRRORING BY HORIZONTAL LINEAR DETAIL EVERY 8"	004.9	PATINA TREATMENT
004.9	WHITE MIRRORING BY HORIZONTAL LINEAR DETAIL EVERY 8"	005.0	WOOD-GOLD-HORIZONTAL BRUSH PAINT, GRAY TEXTURAL

FINISH NOTES	
1.	TYPICAL MIRRORING TAGS ARE APPLIED ON BOTH SIDES UNLESS OTHERWISE NOTED
2.	CONSIDER 20% WASTE TO HAVE BLACK PLASTIC LINING (PL-1) ON
3.	REFER TO FLOORFINISH PLAN, SHEET A-101.00 FOR FLOOR FINISHES
4.	REFER TO REFLECTED CEILING FINISH PLAN, SHEET A-101.00 FOR CEILING FINISHES
5.	REFER TO FINISH SCHEDULE, SHEET A-101.00 FOR FINISH SPECIFICATIONS
6.	A - WHITE INDICATES MIRRORING BY-16/8"

APPROXIMATE DISPLAY CAPACITY	
DESCRIPTION	QUANTITY
WOMEN'S BOUTIQUE	10,000 - 14,000
WOMEN'S	4,000 - 6,000
ACCESSORIES	10,000 - 14,000
TOTAL FOR BOTH WINGS	10,000 - 14,000
POLISHED OR WAXED	17,000
ACCESSORIES CASES	10,000

AREA BREAKDOWN		
RM #	DESCRIPTION	AREA
100	SALES AREA	22,762 FT <sup>2</sup>
101	CASHIER	10,000 FT <sup>2</sup>
102	RESTROOM	8,000 FT <sup>2</sup>
103	T&O ON FLOOR	10,000 FT <sup>2</sup>
	TOTAL	50,762 FT <sup>2</sup>

DATE: 08/11/10  
 SCALE: AS NOTED  
 DRAWING NUMBER: A-101.00  
 SHEET # 1 OF 1

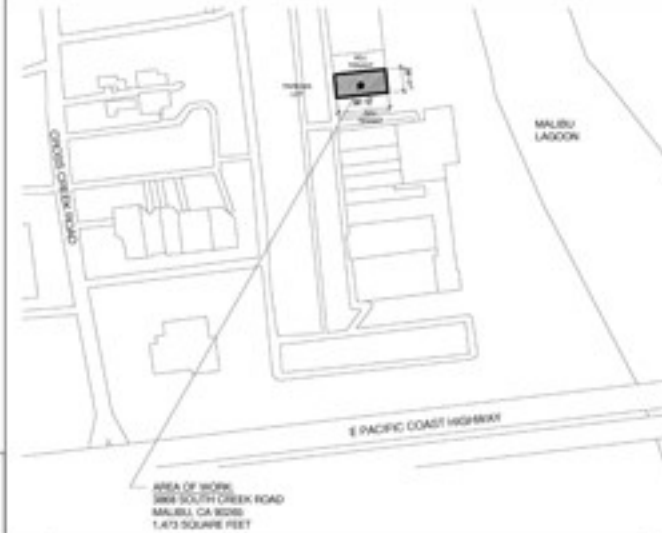
# ZADIG & VOLTAIRE

3868 SOUTH CREEK ROAD, MALIBU, CALIFORNIA 90265

## PROJECT MAPS



**ZADIG & VOLTAIRE**  
3868 SOUTH CREEK ROAD  
MALIBU, CA 90265



**AREA OF WORK**  
3868 SOUTH CREEK ROAD  
MALIBU, CA 90265  
1,473 SQUARE FEET

**A VICINITY MAP**  
SCALE: N.T.S.

**B SITE LOCATION MAP**  
SCALE: N.T.S.

## PROJECT INFORMATION

**DESCRIPTION OF WORK:**  
THE SCOPE OF NEW WORK INCLUDES MINOR INTERIOR RENOVATION TO THE EXISTING 1,473 S.F. STORE. MEAC TO REMAIN UNCHANGED, NEW LIGHTING, NEW PARTITION WALLS FOR FITTING ROOM RESTRICTIONS, NEW DISPLAY FIXTURES AND FINISHES THROUGHOUT.

**DESCRIPTION OF AREA OF WORK:**  
CURRENT RETAIL SPACE IS 1,473 SQUARE FEET. THERE SHALL BE NO CHANGE IN USE, EGRESS OR OCCUPANCY FILED UNDER THIS APPLICATION.

**APPLICABLE CODES:**  
BUILDING CODE: 2008 IBC, 2010 CALIFORNIA BUILDING CODE (VOLUME 1 & 2)  
PLUMBING CODE: 2009 IPC, 2010 CALIFORNIA PLUMBING CODE  
MECHANICAL CODE: 2009 IMC, 2010 CALIFORNIA MECHANICAL CODE  
NATIONAL ELECTRICAL CODE: 2011, 2010 CALIFORNIA ELECTRICAL CODE (2008 NEC)  
FIRE PROTECTION: 2009 IFC  
ENERGY: 2010 CALIFORNIA ENERGY CODE

**CONSTRUCTION CLASS:** CLASS III-COMBUSTIBLE, NON-SPRINKLERED

**OCCUPANCY GROUP:** M - MERCANTILE (NO CHANGE IN OCCUPANCY)

## NUMBER OF SETS - WORK FOR PERMIT

000000	ARCHITECTURAL DRAWINGS	
1.000	TITLE SHEET	1
2.000	20% ADA ACCESSIBILITY ROUTES	1
3.000	DOOR AND WINDOW SCHEDULE	1
40.000	EGRESS PLAN & CODE ANALYSIS	1
090001	DEMOLITION PLAN	1
A.100	FLOOR FINISH PLAN	1
A.102	PARTITION PLAN	1
A.104	FLOOR FINISH PLAN	1
A.104	POWER AND COMMUNICATIONS PLAN	1
A.104	REFLECTED CEILING AND LIGHTING PLAN	1
A.200	PROPOSED STOREFRONT ELEVATION	1
A.200	PROPOSED SECTIONAL ELEVATIONS	1
A.200	ENLARGED FITTING ROOM PLAN, ELEVATIONS AND DETAILS	1
A.204	ENLARGED ADA RESTROOM PLAN & ELEVATIONS	1
A.200	MILKWORK CASHWASH DOOR DETAILS	1
000000	ENGINEERING DRAWINGS	
M.100	MEDICAL GENERAL NOTES	1
M.100	MEDICAL SPECIFICATIONS	1
M.100	MEDICAL PLAN	1
E.100	ELECTRICAL SPECIFICATIONS	1
E.200	GENERAL NOTES	1
E.300	LIGHTING PLAN	1
E.400	POWER PLAN	1
E.400	WIRING DIAGRAM & PANEL SCHEDULES	1
E.500	TITLE 24 COMPLIANCE	1
E.601	TITLE 24 COMPLIANCE (2007)	1
E.602	TITLE 24 COMPLIANCE (2007)	1
P.100	PLUMBING SYMBOLS, DETAILS AND NOTES	1
P.200	PLUMBING SPECIFICATIONS	1
P.300	PLUMBING PLAN	1

**ZADIG & VOLTAIRE**  
831 Washington Street  
New York, NY 10014  
P 212 965 8787

**CALLISON**  
CALLISON ARCHITECTS, PC  
WWW.CALLISONARCH.COM

**ZADIG & VOLTAIRE**  
3868 South Creek Road  
MALIBU, CA 90265

PROJECT # 114932 00

## PROJECT DIRECTORY

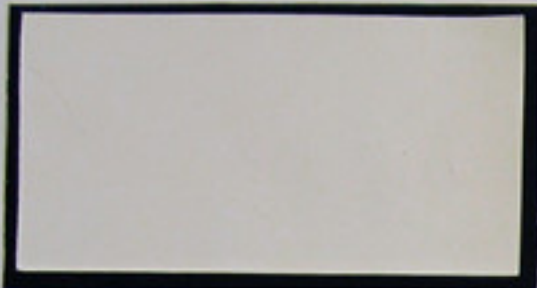
LANDLORD:	TENANT:	ARCHITECT:	MEP ENGINEER:	GENERAL CONTRACTOR:	SECURITY:	TELEPHONE & DATA:	MEDIA & AUDIO:	E.A.S. SYSTEM:
<b>NEWMARK GRUBB</b> KNIGHT FRANK 1875 CENTURY PARK EAST SUITE 1380 LOS ANGELES, CA 90067 CONTACT: JAY LUDRIS PH(DIRECT): 310-488-5000 PH(MAIN): 310-487-8880 jfludris@nfrk.com	<b>ZV NY, INC.</b> dba <b>ZADIG &amp; VOLTAIRE</b> 831 WASHINGTON STREET NEW YORK, NY 10014 CONTACT: PASCALINE AUDREN PH: 212-965-8787 gaudren@zadigvoltaire.com	<b>CALLISON ARCHITECTS, PC.</b> 1453 THIRD STREET PROMENADE SUITE 400 SANTA MONICA, CA 90401 ARCH. OF REC: PAUL MAKOWICKI CONTACT: CHRISTINA MAGRANA PH(DIRECT): 646-747-0398 PH(MAIN): 212-354-8240 christina.magrana@callison.com paul.makowicki@callison.com	<b>ROSHI ENGINEERING, PC</b> 142 WEST 36TH STREET, 17TH FLOOR NEW YORK, NY 10018 CONTACT: CLAUDIO KOLEGA PH(DIRECT): 646-747-3349 PH(MAIN): 212-964-0422 ckolega@rosheengineering.com	<b>TBD</b>	<b>DGA SECURITY SYSTEMS INC.</b> 429 W 53RD STREET, NEW YORK, NY 10019 CONTACT: ELLIOT SCHONBRUN PH: 212-840-5162 FAX: 212-840-5678 elliot.schonbrun@dgasecurity.com	<b>BO TECHNOLOGY</b> 142 W 36TH ST NEW YORK, NY 10018 CONTACT: JONATHAN TRAM PH: 212-967-4477 jtram@botechnology.com	<b>CUSTOM MEDIA ENVIRONMENTS</b> 62 WILLIAM ST NEW YORK, NY 10005 CONTACT: AMANDA JANKELOVICS PH: 516-586-3600 ext 221 amanda@cmeeaw.com	<b>AMERTAG</b> 219 BEACH 100TH ST NEW YORK, NY 11694 CONTACT: HERB REPKIN PH: 718-318-4904 herb@amertag.net

ISSUE NUMBER DATE  
REVISION SET 10.07.18

FILE NO

**T-000**

ALICE CHAN  
Additional work sample | Zadig and Voltaire, in USA



NO.	DATE	DESCRIPTION	PROGRESS	STATUS	REMARKS
1	10/15/11	CONCEPT DESIGN	100%	COMPLETE	CONCEPT DESIGN
2	11/15/11	SCHEMATIC DESIGN	100%	COMPLETE	SCHEMATIC DESIGN
3	12/15/11	PRELIMINARY DESIGN	100%	COMPLETE	PRELIMINARY DESIGN
4	01/15/12	FINAL DESIGN	100%	COMPLETE	FINAL DESIGN

NO.	DATE	DESCRIPTION	PROGRESS	STATUS	REMARKS
1	02/15/12	CONSTRUCTION ADMINISTRATION	100%	COMPLETE	CONSTRUCTION ADMINISTRATION



**Callison Architects**

NO.	DATE	DESCRIPTION	PROGRESS	STATUS	REMARKS
1	03/15/12	CONSTRUCTION ADMINISTRATION	100%	COMPLETE	CONSTRUCTION ADMINISTRATION

**maje**  
 GROUP, INC.  
 4800 WALKER AVE.  
 SUITE 200  
 NEW YORK, NY 10017

**CALLISON**  
 ARCHITECTS  
 WWW.CALLISON.COM

**MAJE SHORT HILLS**  
 1250 MORRIS TPKE  
 SHORT HILLS, NJ 07078

PROJECT # 21085 01

SAMPLE BOARD

ALICE CHAN  
 Additional work sample | Maje Short Hills Shopping Mall in New Jersey, USA







ALICE CHAN  
 Additional work sample | Horoy Shopping Mall in Shenzhen, China





CEILING LIGHT COVE

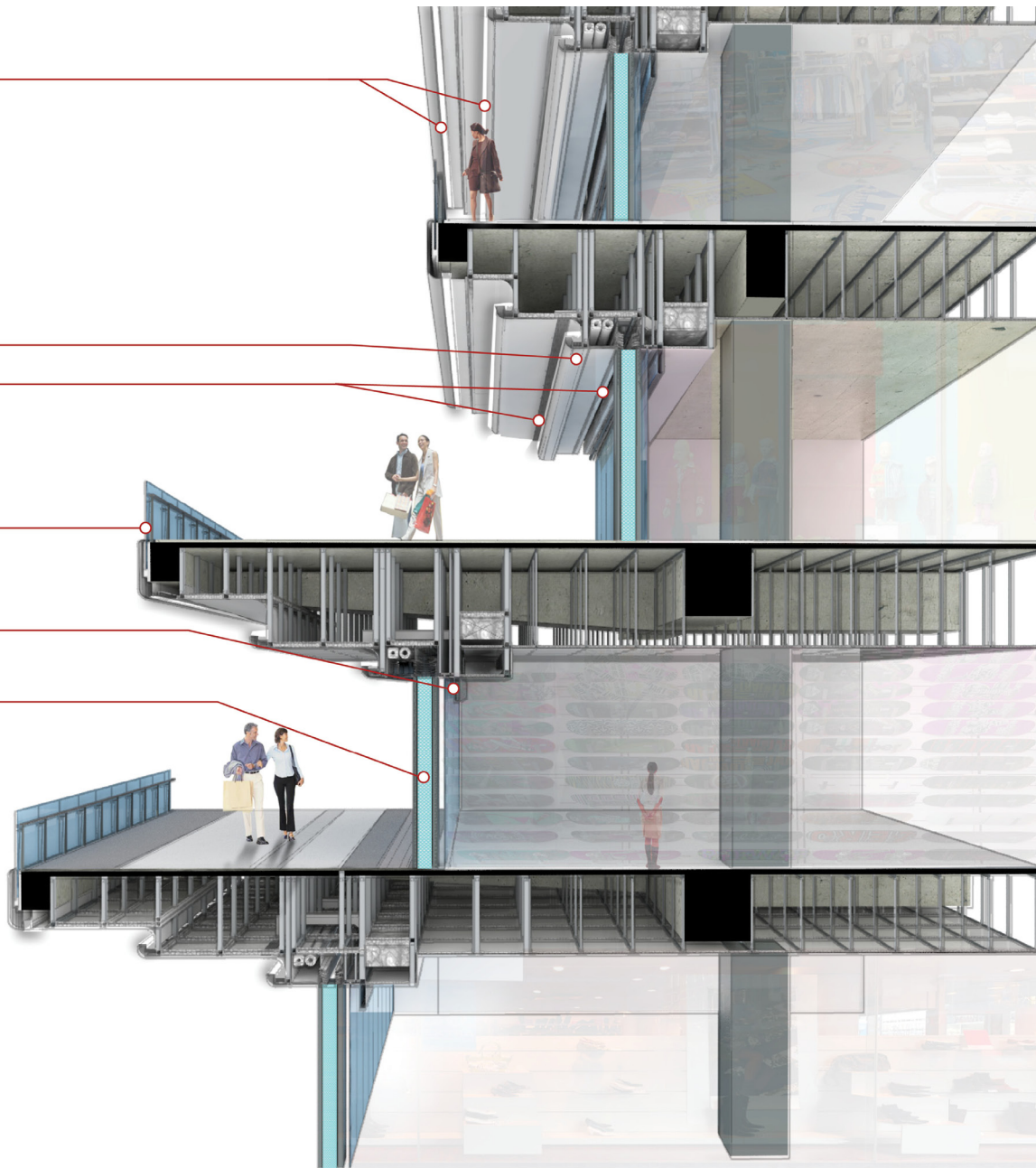
FIRESHUTTER IN FRONT OF STOREFRONT

AIR VENT

HANDRAIL GLASS

SIGNBAND

DEMISING PIERS



LAGUARDA LOW ARCHITECTS

鸿荣源 优越生活实践者

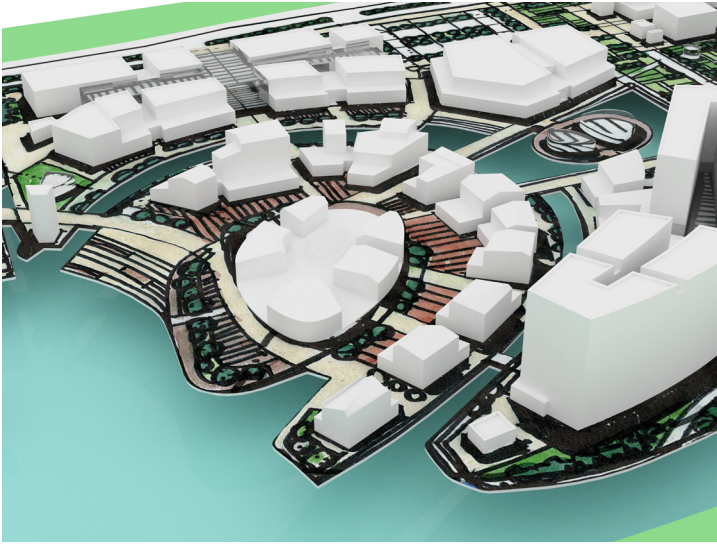
BULKHEAD SECTIONAL PERSPECTIVE 2  
SCHEMATIC DESIGN

HOROY YIFANG CENTER MALL

2013.06.05

SHENZHEN, GUANGDONG, CHINA

ALICE CHAN  
Additional work sample | Horoy Shopping Mall in Shenzhen, China



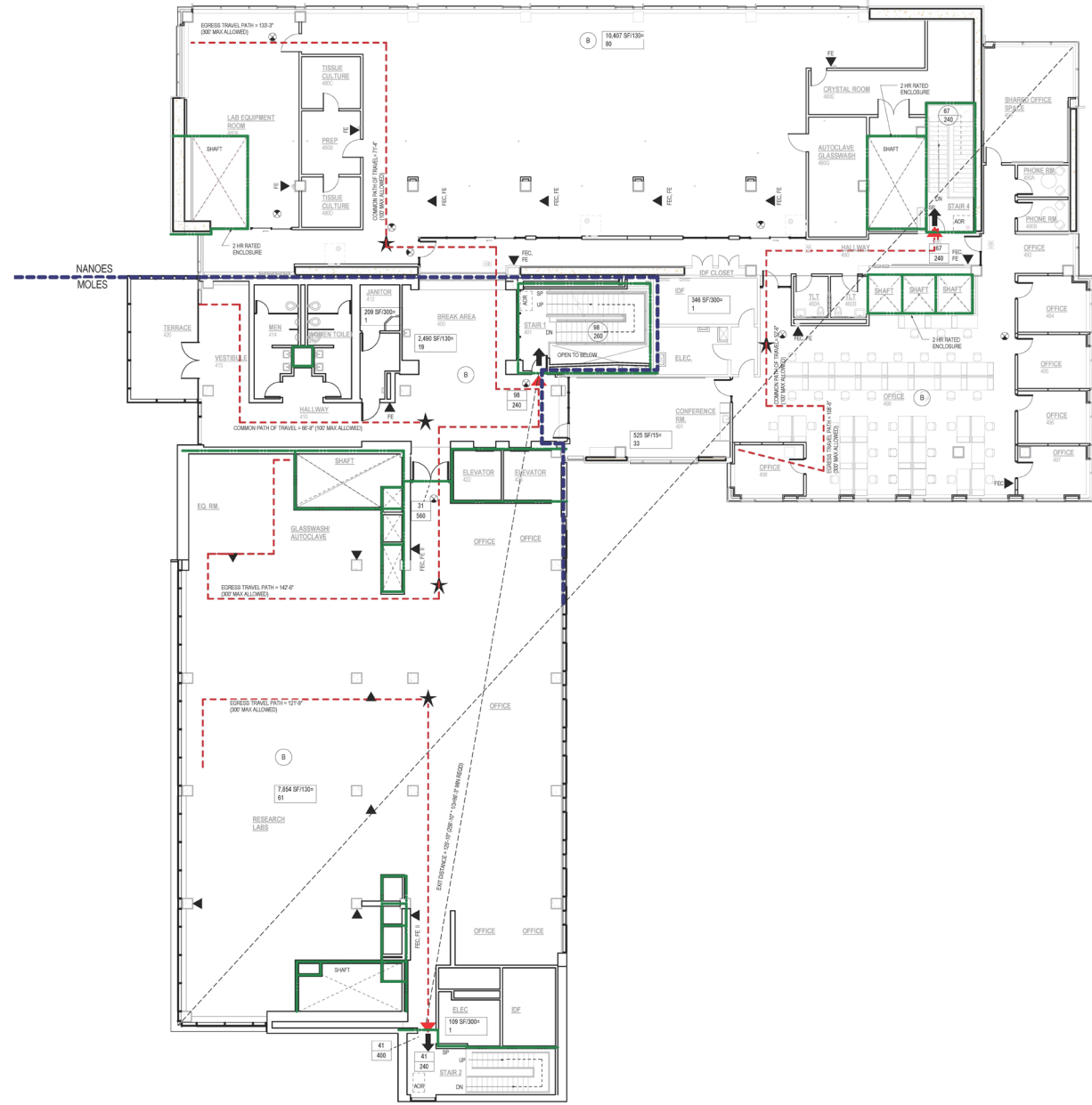
ALICE CHAN  
Additional work sample | Luneng Mixed-use project in Ningbo, China

**FIRE LIFE SAFETY LEGEND:**

1 HOUR FIRE BARRIER  
 2 HOUR FIRE BARRIER  
 3 HOUR FIRE BARRIER

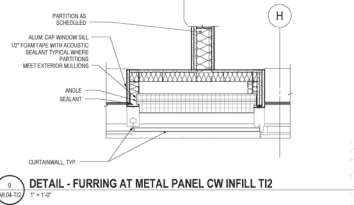
EXIT FROM FLOOR  
 END OF COMMON PATH OF TRAVEL  
 STAIRCASE  
 OCCUPANCY  
 OCCUPANCY  
 EMERGENCY LIGHT FIXTURE  
 EXIT SIGN  
 EXISTING EXIT SIGN  
 FIRE EXTINGUISHER  
 SQUARE FOOTAGE OF AREA  
 OCCUPANT LOAD FACTOR  
 OCCUPANT LOAD  
 OCCUPANT LOAD  
 EXIT OCCUPANT CAPACITY AT STAIRS  
 EXIT OCCUPANT CAPACITY AT STAIRS  
 EXIT OCCUPANT CAPACITY AT STAIRS  
 PARTITION  
 FUTURE PARTITION  
 SIGNAGE TO BE PROVIDED IN INTERIOR EXIT ENCLOSURES CONNECTING MORE THAN THREE STORIES PER IBC 1002.1.6. INCLUDING FLOOR LEVELS, THE TERMINUS AT THE TOP AND BOTTOM OF THE STAIR, THE SIGN IDENTIFICATION, THE ENTRY AND DIRECTION OF EXIT DISCHARGE, WHETHER THERE IS ROOF ACCESS FROM THE STAIR, AND WHETHER THE ROOF ACCESS IS ACCESSED BY A ROOF HATCH.  
 THE SIGN IDENTIFICATION SHALL BE PROVIDED FOR IBC 1002.1.6 AT EACH DOOR TO AN EXITS STAIRWAY AND COMPLYING WITH IBC 1002.1.1.

GENERAL NOTES:  
 1. APPLICABLE BUILDING CODE: 2010 SEATTLE BUILDING CODE  
 2. APPLICABLE ACCESSIBILITY CODE: 2010 SEATTLE BUILDING CODE  
 3. BUILDING TYPE: TYPE I - FIRE RESISTIVE  
 4. SEE ELECTRICAL DRAWINGS FOR LOCATION OF EXIT SIGNS, EXIT PATHWAY LIGHTING & EMERGENCY LIGHTING  
 5. SEE A2 SERIES ARCHITECTURAL DRAWINGS FOR HALLWAY WIDTHS  
 6. FUTURE WORK SHOWN DASHED FOR CLARITY

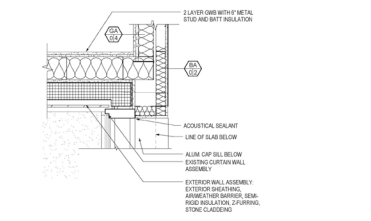


1 LIFE SAFETY PLAN, LEVEL 4-TI2  
 1/8" = 1'-0"

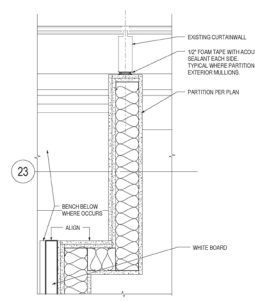
2/18/2016 3:46:06 PM



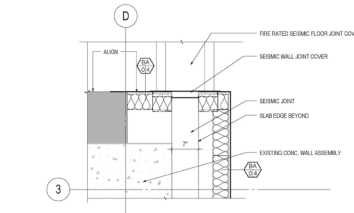
11  
A8.04-T2  
3/1/17  
DETAIL - FURRING AT METAL PANEL CW INFILL T2



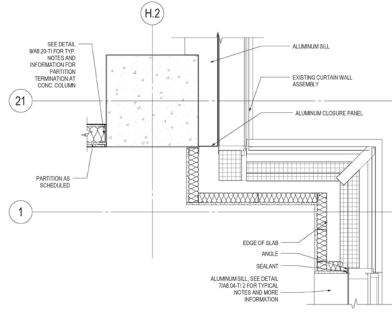
5  
A8.04-T2  
1/1/17  
DETAIL - OFFICE 398 (498 SIM.) CORNER T2



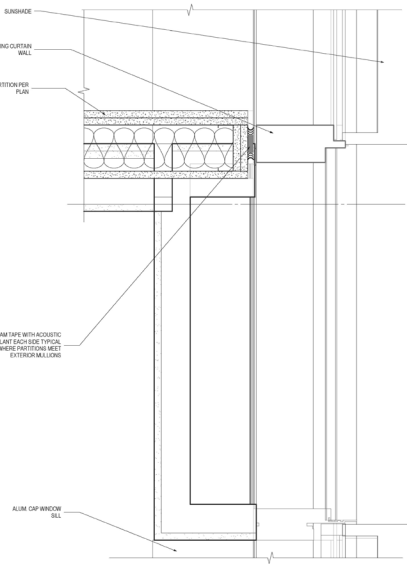
1  
A8.04-T2  
1/17 - 1/17  
PARTITION AT EXTERIOR MULLION



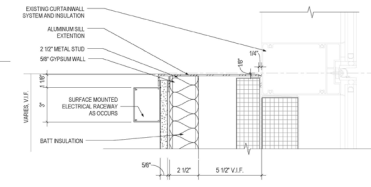
10  
A8.04-T2  
1/1/17  
CONFERENCE ROOM 391 JOINT



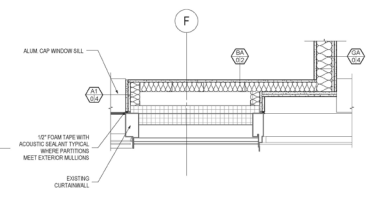
1  
A8.04-T2  
1/1/17  
PARTITION AT EXTERIOR MULLION GRID H.2 & 21



11  
A8.04-T2  
3/1/17  
PARTITION STRAIGHT AT EXTERIOR MULLION, OFFICES T2

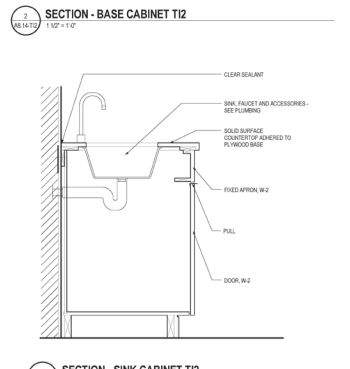
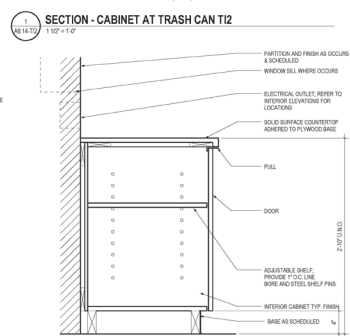
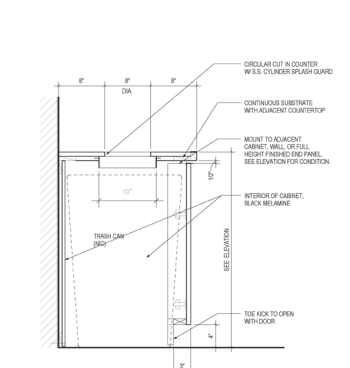
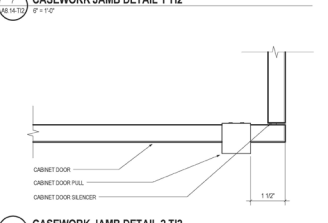
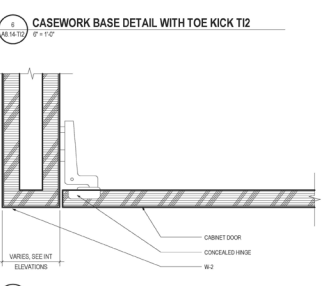
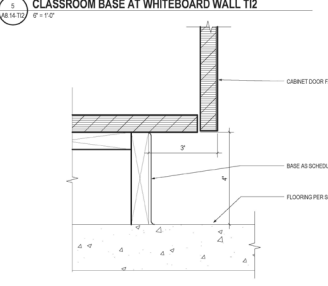
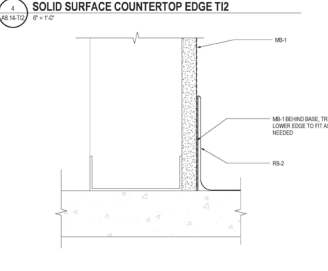
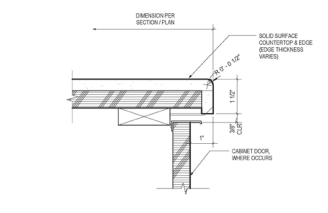
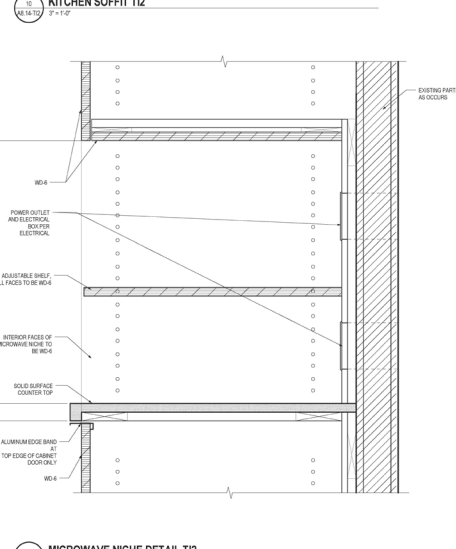
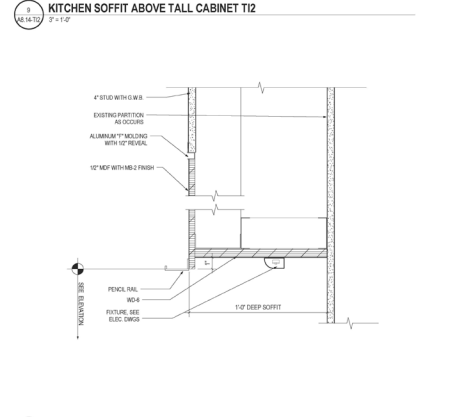
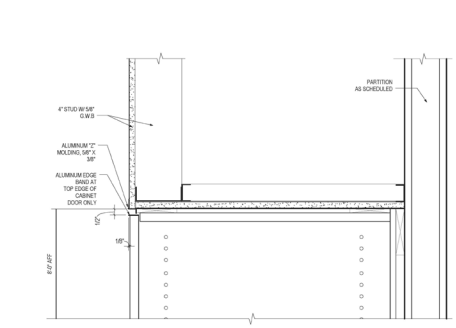
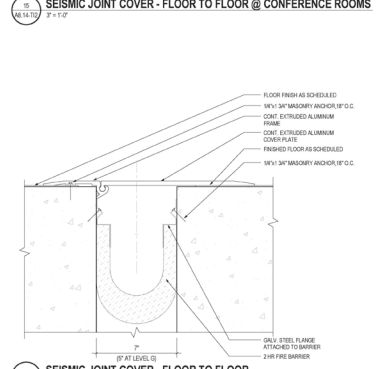
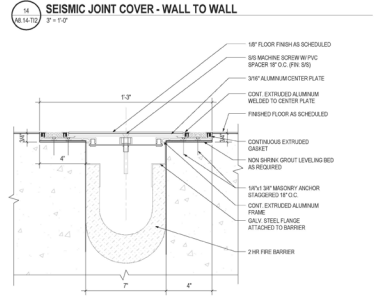
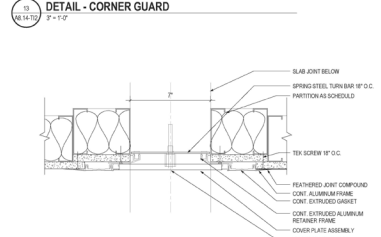
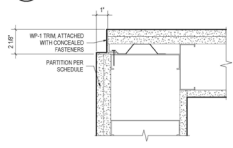
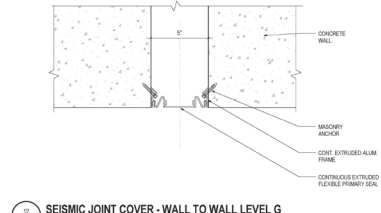


1  
A8.04-T2  
3/1/17  
PARTITION AT EXTERIOR MULLION, SILL



1  
A8.04-T2  
1/1/17  
PARTITION AT EXTERIOR MULLION, OFFICES

2/16/2016 5:40:45 PM



2/18/2016 3:44:04 PM

Revisions

RFI STAMP

**NANO  
ENGINEERING  
AND SCIENCES**  
UNIV OF WASHINGTON  
1701 NE GRANT ST  
SEATTLE, WA

Drawing Title

**PLAN, REFLECTED  
CEILING - LEVEL G**

STAMP

Date: 02.16.2016

ZGF Job No: 043556

UW Project No: 20478

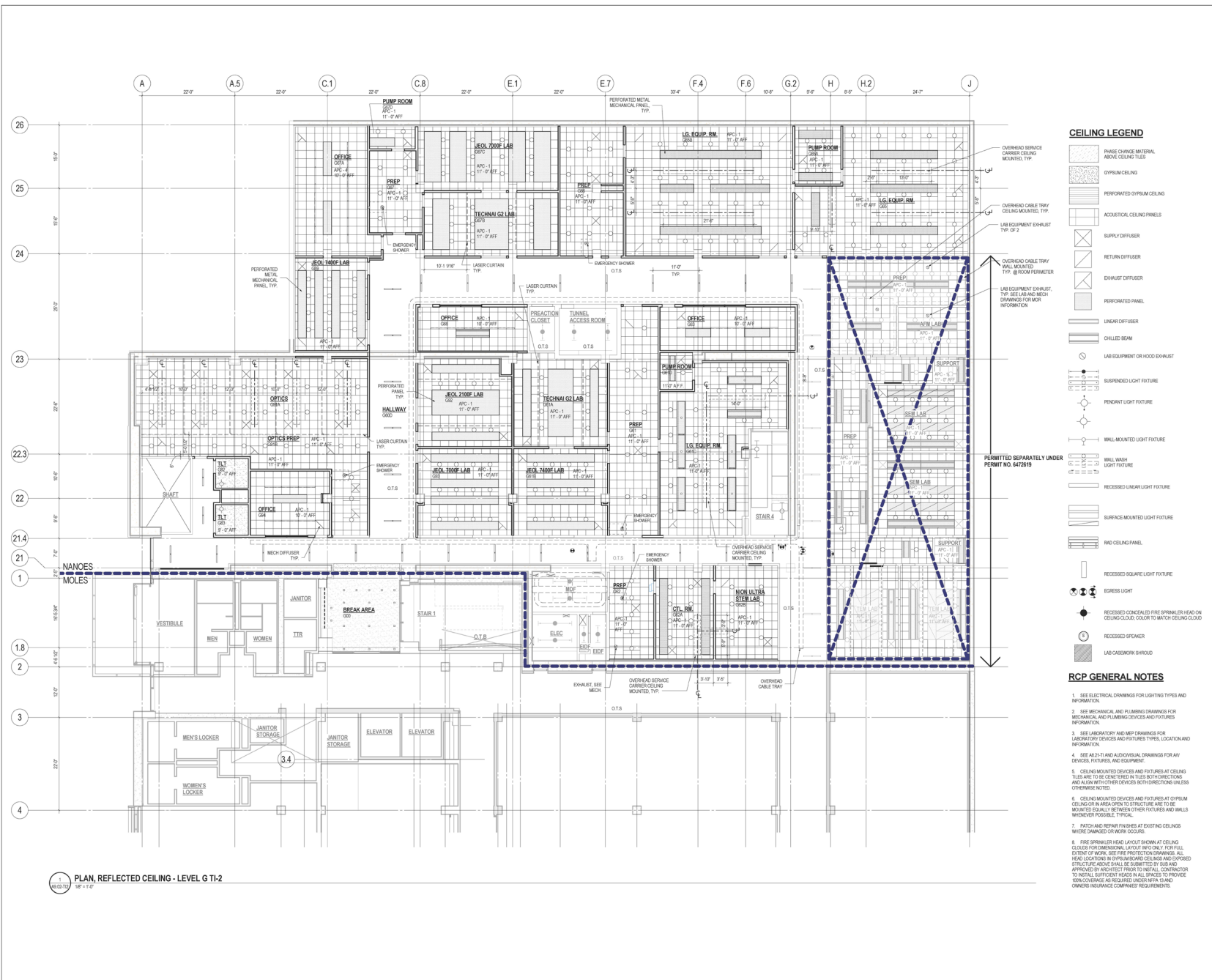
UW Facility No: 4444

UW CPO Contact: Eric McArthur

Drawing No:

**A9.02-T12**

**DR-7 TI-2  
PERMIT SET**



**CEILING LEGEND**

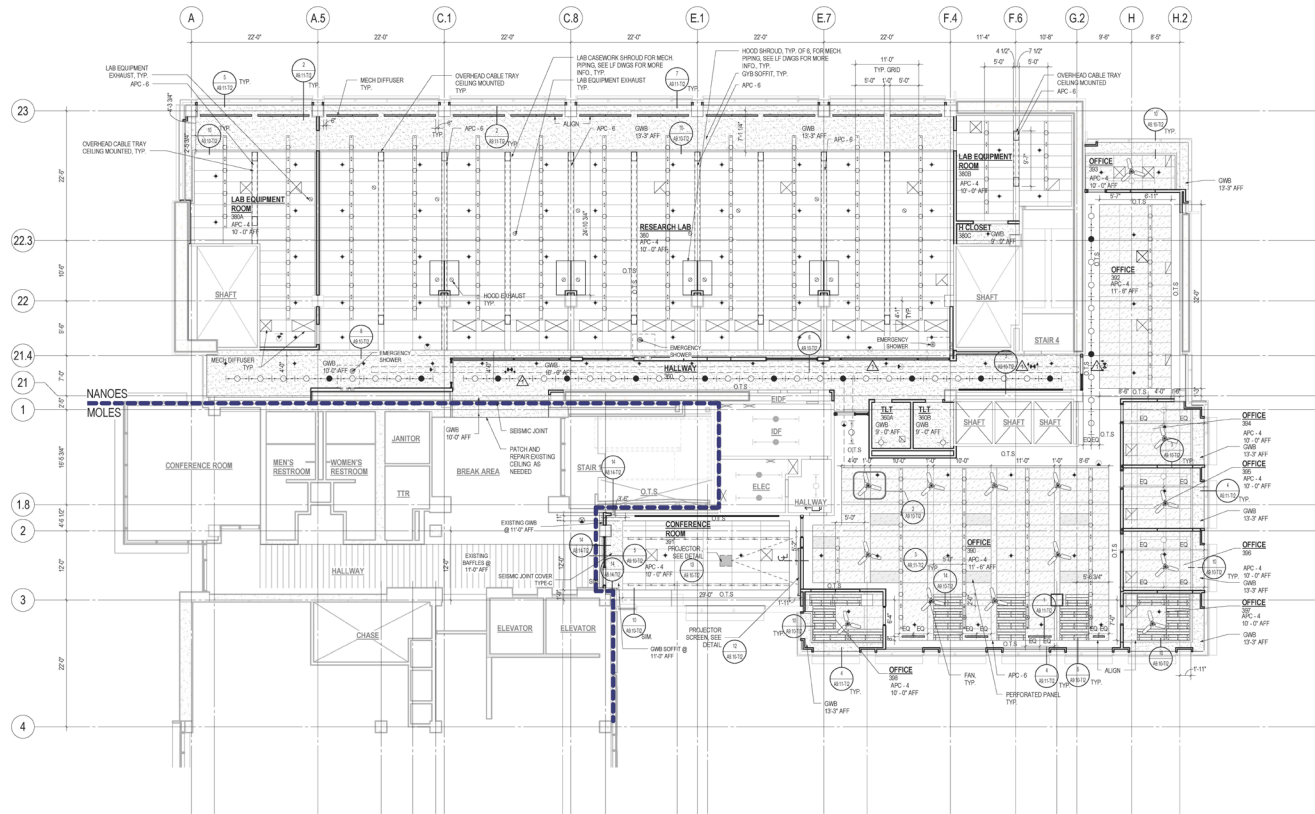
- PHASE CHANGE MATERIAL ABOVE CEILING TILES
- GYPSIUM CEILING
- PERFORATED GYPSIUM CEILING
- ACOUSTICAL CEILING PANELS
- SUPPLY DIFFUSER
- RETURN DIFFUSER
- EXHAUST DIFFUSER
- PERFORATED PANEL
- LINEAR DIFFUSER
- CHILLED BEAM
- LAB EQUIPMENT OR HOOD EXHAUST
- SUSPENDED LIGHT FIXTURE
- PENDANT LIGHT FIXTURE
- WALL MOUNTED LIGHT FIXTURE
- WALL WASH LIGHT FIXTURE
- RECESSED LINEAR LIGHT FIXTURE
- SURFACE MOUNTED LIGHT FIXTURE
- RAD CEILING PANEL
- RECESSED SQUARE LIGHT FIXTURE
- EGRESS LIGHT
- RECESSED CONCEALED FIRE SPRINKLER HEAD ON CEILING CLOUD, COLOR TO MATCH CEILING CLOUD
- RECESSED SPREADER
- LAB CASWORK SHROUD

**RCP GENERAL NOTES**

1. SEE ELECTRICAL DRAWINGS FOR LIGHTING TYPES AND INFORMATION.
2. SEE MECHANICAL AND PLUMBING DRAWINGS FOR MECHANICAL AND PLUMBING DEVICES AND FIXTURES INFORMATION.
3. SEE LABORATORY AND MEP DRAWINGS FOR LABORATORY DEVICES AND DEVICES TYPES, LOCATION AND INFORMATION.
4. SEE A9.21-T1 AND ADDITIONAL DRAWINGS FOR VAV DEVICES, FIXTURES, AND EQUIPMENT.
5. CEILING MOUNTED DEVICES AND FIXTURES AT CEILING TILES ARE TO BE CENTERED IN TILES BOTH HORIZONTALLY AND VERTICALLY UNLESS OTHERWISE NOTED.
6. CEILING MOUNTED DEVICES AND FIXTURES AT GYPSIUM CEILING OR IN AREA OPEN TO STRUCTURE ARE TO BE MOUNTED EQUALLY BETWEEN OTHER FIXTURES AND WALLS WHENEVER POSSIBLE, TYPICAL.
7. PATCH AND REPAIR FINISHES AT EXISTING CEILING WHERE CHANGED OR WORK OCCURS.
8. FIRE SPRINKLER HEAD LAYOUT SHOWN AT CEILING CLOUDS IS FOR INFORMATIONAL PURPOSES ONLY. FOR FULL EXTENT OF WORK, SEE FIRE PROTECTION DRAWINGS. ALL HEAD LOCATIONS IN PROPOSED CEILING CLOUDS AND EXISTING STRUCTURE ABOVE SHALL BE SUBMITTED BY SUB AND APPROVED BY ARCHITECT PRIOR TO INSTALL. CONTRACTOR TO INSTALL SUFFICIENT HEADS IN ALL SPACES TO PROVIDE WORKING CLEARANCE AS REQUIRED UNDER FIRE ALARM OWNERS INSURANCE COMPANIES REQUIREMENTS.

PLAN, REFLECTED CEILING - LEVEL G TI-2  
1/8" = 1'-0"





**CEILING LEGEND**

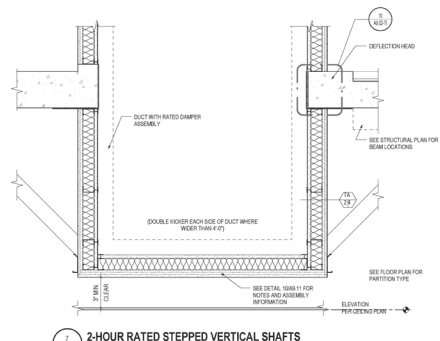
- PHASE CHANGE MATERIAL ABOVE CEILING TILES
- GYP/SUM CEILING
- PERFORATED GYP/SUM CEILING
- ACOUSTICAL CEILING PANELS
- SUPPLY DIFFUSER
- RETURN DIFFUSER
- EXHAUST DIFFUSER
- PERFORATED PANEL
- LINEAR DIFFUSER
- CHILLED BEAM
- LAB EQUIPMENT OR HOOD EXHAUST
- SUSPENDED LIGHT FIXTURE
- PENDANT LIGHT FIXTURE
- WALL MOUNTED LIGHT FIXTURE
- WALL WASH LIGHT FIXTURE
- RECESSED LINEAR LIGHT FIXTURE
- SURFACE MOUNTED LIGHT FIXTURE
- RAD CEILING PANEL
- RECESSED SQUARE LIGHT FIXTURE
- EGRESS LIGHT
- RECESSED CONCEALED FIRE SPRINKLER HEAD ON CEILING CLOUD COVER TO MATCH CEILING GRID
- RECESSED SPEAKER
- LAB CASEWORK SHROUD

**RCP GENERAL NOTES**

1. SEE ELECTRICAL DRAWINGS FOR LIGHTING TYPES AND INFORMATION
2. SEE MECHANICAL AND PLUMBING DRAWINGS FOR MECHANICAL AND PLUMBING DEVICES AND FIXTURES INFORMATION
3. SEE LABORATORY AND MEP DRAWINGS FOR LABORATORY DEVICES AND FIXTURES TYPES, LOCATION AND INFORMATION
4. SEE A9.20-TI AND A9.20-CV DRAWINGS FOR ANY DEVICES, FIXTURES, AND EQUIPMENT
5. CEILING MOUNTED DEVICES AND FIXTURES AT CEILING TILES ARE TO BE CENTERED IN TILES BOTH HORIZONTALLY AND VERTICALLY UNLESS OTHERWISE NOTED
6. CEILING MOUNTED DEVICES AND FIXTURES AT GYP/SUM CEILING OR IN AREA OPEN TO STRUCTURE ARE TO BE MOUNTED EQUALLY BETWEEN OTHER FIXTURES AND WALLS WHENEVER POSSIBLE, TYPICAL
7. PATCH AND REPAIR FINISHES AT EXISTING CEILING ARE TO BE MATCHED TO WORK CONDITIONS
8. FIRE SPRINKLER HEAD LAYOUT SHOWN AT CEILING CLOUD COVER FOR DIMENSIONAL LAYOUT ONLY. FOR FULL EXTENT OF WORK, SEE FIRE PROTECTION DRAWINGS. ALL HEAD LOCATIONS IN GYP/SUM CEILING AND EXPOSED STRUCTURE ABOVE SHALL BE SEAM TIGHT TO CEILING AND APPROVED JACKETS FROM TO METALL CONNECTION TO METALL SUPPORT HEADS IN ALL SPACES TO PROVIDE NON-COMBUSTIBLE AS REQUIRED UNDER WPA 10 AND OWNER'S INSURANCE COMPANIES' REQUIREMENTS

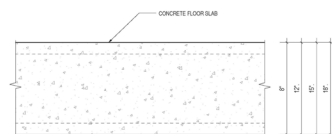
2 PLAN, REFLECTED CEILING - LEVEL 03 TI-2  
 10/15/15

2/15/2016 3:44:23 PM



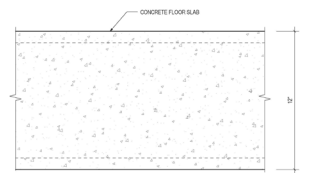
**7 2-HOUR RATED STEPPED VERTICAL SHAFTS**

A9.11-TI2 2'-1"0"



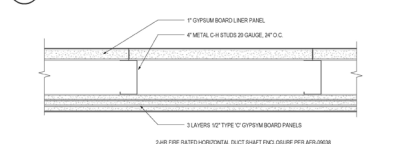
**8 CONCRETE FLOOR SLAB - RATING - 2 HR MIN.**

A9.11-TI2 2'-1"0"



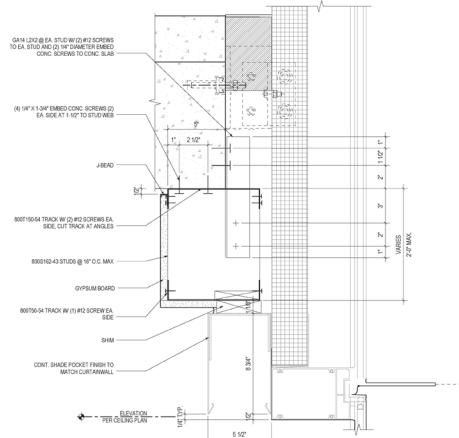
**9 CONC. FLOOR SLAB ABOVE TRANSFORMER VAULT - RATING - 3 HR**

A9.11-TI2 2'-1"0"



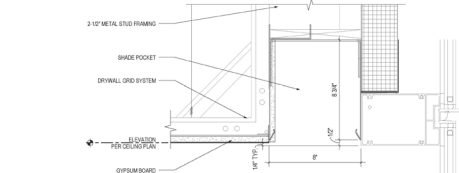
**10 2-HOUR RATED CEILING DETAIL**

A9.11-TI2 2'-1"0"



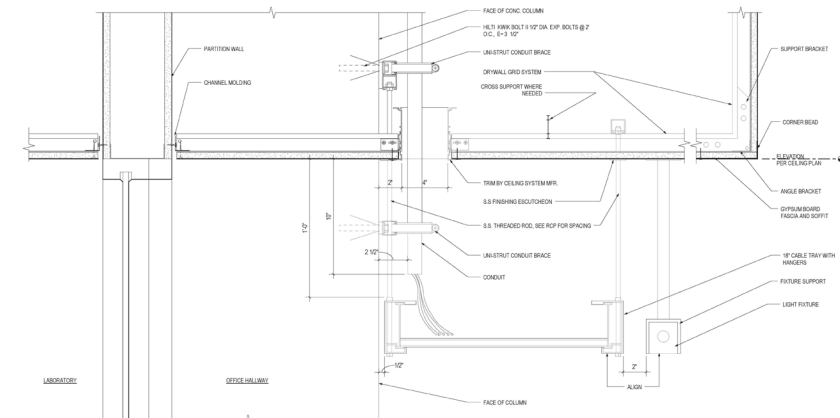
**4 WINDOW SHADE POCKET AT OFFICE AND CLASSROOM**

A9.11-TI2 2'-1"0"



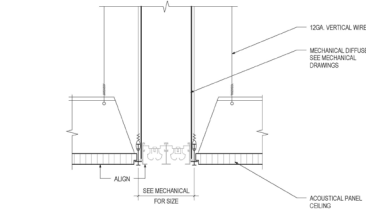
**5 WINDOW SHADE POCKET AT LAB, CONFERENCE**

A9.11-TI2 2'-1"0"



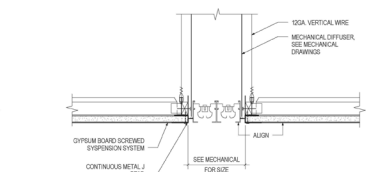
**6 GYPSUM BOARD CEILING AT OFFICE HALLWAY**

A9.11-TI2 2'-1"0"



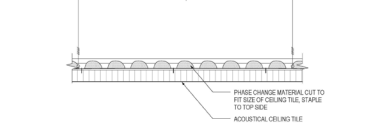
**1 DETAIL - LINEAR SLOT AIR DIFFUSER IN ACOUSTICAL CEILING**

A9.11-TI2 2'-1"0"



**2 DETAIL - LINEAR SLOT AIR DIFFUSER IN GYPSUM BOARD CEILING**

A9.11-TI2 2'-1"0"



**3 DETAIL - PHASE CHANGE INSULATION ABOVE CEILING TILE**

A9.11-TI2 2'-1"0"

**GENERAL NOTES**

- ALL WALL BENCHTOPS AND MOVABLE TABLES SHALL BE 33" DEEP INCLUDING WALL BENCH BACK SPLASH (UNLESS OTHERWISE NOTED).
- ALL ISLAND BENCHTOPS SHALL BE 66" DEEP (UNLESS OTHERWISE NOTED).
- ALL BENCHES SHALL BE 36" HIGH (UNLESS OTHERWISE NOTED). ALL TABLES AND MOBILE WORKSTATIONS TO BE ADJUSTABLE HEIGHT.
- ALL BENCH AND MOBILE WORKSTATION WORKSURFACES TO BE 1" THICK EPOXY RESIN (UNLESS OTHERWISE NOTED).
- BACK SPLASHES AT WINDOW WALLS TO BE 1" HIGH AND 2" THICK / BACK SPLASHES AT ISLAND BENCHES WITH SINKS TO BE 4" HIGH AND 1" THICK. ALL OTHER BACK AND SIDE SPLASHES TO BE 3/4" THICK AND 4" HIGH, UNLESS OTHERWISE NOTED.
- PROVIDE SIDESPLASHES AT ALL BENCH TOPS AGAINST FUME HOODS AND/OR ADJACENT WALLS.
- OVERALL LENGTH OF BENCHTOPS SHALL BE DETERMINED BY CASEWORK SIZES AND DIMENSIONS AS INDICATED ON PLANS. TOPS SHALL OVERHANG 1/2" AT EACH END AND 1" FROM FRONT OF BASE CABINETS AND TABLES. WHEN OVERALL DIMENSIONS ARE GIVEN, 1/2" OVERHANG IS NOT INCLUDED.
- ALL CASEWORK, FUME HOODS AND ANY OTHER FURNISHINGS WITH EXPOSED-TO-VIEW BACKS AND SIDES SHALL BE FINISHED.
- INSTALL CLOSURE PANELS BETWEEN BACK OF CABINETS OR HOODS AND WALLS AT EXPOSED ENDS AND BETWEEN BASE CABINETS AND/OR HOODS THAT ARE SET BACK TO BACK.
- ALL PENETRATIONS THROUGH BENCHTOP SHALL BE SEALED WITH SEALANT.
- BACKS OF COUNTERTOPS AND SPLASHES AGAINST WALLS SHALL BE SEALED TO THE WALL WITH SEALANT.
- CONTRACTOR SHALL FIELD VERIFY ALL DIMENSIONS PRIOR TO FABRICATION.
- OWNER'S REPRESENTATIVE WILL SELECT COLORS FOR ALL COMPONENTS OF PROJECT INDICATED ON THESE DRAWINGS. COLOR SELECTION WILL BE FROM THE CASEWORK MANUFACTURER'S STANDARD COLOR LINE.
- SAFETY SHOWER/EYEWASH UNITS SHALL COMPLY WITH ANSI STANDARDS FOR USABILITY BY THE PHYSICALLY DISABLED. SAFETY SHOWER/EYEWASH UNITS SHALL BE FURNISHED UNDER DIVISION 11 FOR INSTALLATION UNDER DIVISION 22.
- FOR LABORATORY SERVICE FITTING TYPES, LOCATIONS AND ORDER, SEE LABORATORY FURNISHINGS PLANS. THESE FITTINGS SHALL BE PROVIDED UNDER DIVISION 11, FOR INSTALLATION UNDER DIVISION 22 UNLESS OTHERWISE NOTED.
- WHERE NO FUME HOOD OCCURS ADJACENT TO CORROSIVE STORAGE OR SOLVENT STORAGE CABINETS, ROUTE VENT PIPE (IN PIPE CHASE) UP NEAREST PIPE DROP ENCLOSURE TO EXHAUST DUCT SYSTEM FOR CONNECTION BY DIVISION 23.
- WHERE FUME HOOD OCCURS ADJACENT TO CORROSIVE STORAGE CABINETS, ROUTE VENT PIPE (IN PIPE CHASE) TO FUME HOOD AND EXTEND 4" ABOVE FUME HOOD WORK SURFACE BEHIND BAFFLE.
- LOCATION OF EQUIPMENT, SUCH AS FUME HOODS, OVERHEAD SERVICE CARRIERS, BRACES OR ANY OTHER ITEMS THAT MAY INTERFERE WITH LIGHTING, STRUCTURAL OR MECHANICAL SYSTEMS, SHALL BE CAREFULLY COORDINATED. NOTIFY OWNER'S REPRESENTATIVE OF DISCREPANCIES PRIOR TO PROCEEDING WITH WORK.
- UNLESS OTHERWISE NOTED, ALL MISCELLANEOUS CHANNELS, BRACKETS AND FITTINGS INDICATED ON ALL LABORATORY FURNISHINGS DRAWINGS SHALL BE SUPPLIED, INSTALLED AND PAINTED UNDER DIVISION 12.
- CONTRACTOR SHALL EXAMINE ALL LABORATORY FURNISHINGS PLANS AND COORDINATE WITH REFLECTED CEILING PLANS FOR PROPER CEILING HEIGHTS & PIPE DROP ENCLOSURE HEIGHTS AND LOCATIONS.
- OVERHEAD SERVICE CARRIERS, HEAVY DUTY UNISTRUT AND OTHER STRUCTURALLY ANCHORED AND SUSPENDED DEVICES WHICH REQUIRE COORDINATION WITH OTHER TRADES SHALL BE THE RESPONSIBILITY OF DIVISION 11 (UNLESS OTHERWISE NOTED). ADDITIONAL FRAMING MAY BE REQUIRED TO ACCOMMODATE ANCHORAGE AROUND DUCTWORK OR OTHER OBSTRUCTIONS.
- ALL BULLETIN BOARDS, MARKER BOARDS, CHALKBOARDS, PROJECTION SCREENS, COAT RACKS, PAPER TOWEL DISPENSERS, AND FIRE EXTINGUISHERS ARE INDICATED ON THE "LF" DRAWINGS FOR COORDINATION ONLY.
- SERVICE FITTINGS SHOWN ON THE "LF" PLAN DRAWINGS ARE FOR LOCATION ONLY. REFER TO DETAILS AND SPECIFICATIONS FOR ACTUAL FITTINGS.
- ELECTRICAL DEVICES SHALL BE PROVIDED UNDER DIVISION 26. ELECTRICAL DEVICES SHOWN ON THE "LF" DRAWINGS ARE FOR THE LOCATION OF CASEWORK CUTOUTS. FUME HOODS AND LAMINAR FLOW HOODS SHALL BE PROVIDED BY THE EQUIPMENT SUPPLIER.
- ALL WALL MOUNTED RACEWAYS SHALL BE MOUNTED 43" A.F.F. TO THE BOTTOM OF THE RACEWAY
- AT CYLINDERS SHOWN ON FLOOR PLANS WHERE GAS CONTENTS ARE NOT IDENTIFIED, GASES ARE INERT. U.O.N.

**ABBREVIATIONS**

**TYPICAL ABBREVIATIONS**

ADA	AMERICAN DISABILITIES ACT
A.F.F.	ABOVE FINISHED FLOOR
CENT.	CENTRIFUGE
CFM	CUBIC FEET/MINUTE
DA	DIAMETER
DN.	DIVISION
EQUIP	EQUIPMENT
FZR.	FREEZER
GA.	GALVE
H.D.	HEAVY DUTY
MAX.	MAXIMUM
MIN.	MINIMUM
MTD.	MOUNTED
N.T.S.	NOT TO SCALE
O.C.	ON CENTER
OFOI	OWNER FURNISHED, OWNER INSTALLED
OFICI	OWNER FURNISHED, CONTRACTOR INSTALLED
O.H.	OVERHEAD
OHSC	OVERHEAD SERVICE CARRIER
REF.	REFRIGERATOR
ST STL.	STAINLESS STEEL
TEMP	TEMPERATURE
TYP.	TYPICAL
U.C.	UNDER COUNTER
U.O.N.	UNLESS OTHERWISE NOTED
WP	WEATHERPROOF

**LABORATORY SERVICE ABBREVIATIONS**

CA	COMPRESSED AIR (100 PSIG)
CO2	CARBON DIOXIDE
EW	EYEWASH
He	HELIUM
He(R)	HELIUM RETURN
LA	LABORATORY AIR (15 PSIG)
LCW	LABORATORY COLD WATER
LG	LABORATORY GAS
LHW	LABORATORY HOT WATER
LV	LABORATORY VACUUM
N2	NITROGEN GAS
PCWS	PROCESS COOLING WATER SUPPLY
PCWR	PROCESS COOLING WATER RETURN
PW	PURIFIED WATER
SG	SPECIAL GAS
SS	SAFETY SHOWER
—(OH)	SERVICE FITTING LOCATED AT OVERHEAD SERVICE CARRIER/PANEL
—(V)	SERVICE VALVE - PROVIDED UNDER DIVISION 22

**LABORATORY SYMBOLS LEGEND**

SYMBOL	LEGEND	DESCRIPTION	REF.
1	[Symbol]	PIPE DROP ENCLOSURE	1-4 (1F4.05)
2	[Symbol]	STAINLESS STEEL DRYING RACK	7 (1F4.05)
3	[Symbol]	ADJUSTABLE WALL SHELVING (2 TIER U.O.N.)	7 (1F4.05)
4	[Symbol]	SHELVING WITH GRADUATED CYLINDER RACK BELOW (1 TIER U.O.N.)	9 (1F4.05)
5	[Symbol]	3"ø BENCHTOP GROMMET	8 (1F4.03)
6	[Symbol]	CYLINDER RESTRAINT	8 (1F4.02)
7	[Symbol]	PAPER TOWEL DISPENSER - OWNER FURNISHED, OWNER INSTALLED	X
8	[Symbol]	EQUIPMENT EXHAUST (4"ø U.O.N.) - 6" BELOW CEILING (UNDER DIVISION 23) - SEE EXHAUST SCHEDULE	X
9	[Symbol]	OVERHEAD CABLE TRAY WITH INTEGRAL SERVICE PANEL (WHERE OCCURS) - CEILING MOUNTED	1-4 (1F4.05)
10	[Symbol]	PIPE DROP SHROUD AT OVERHEAD SERVICE CARRIERS	2 (1F4.03)
11	[Symbol]	HEAVY DUTY ADJUSTABLE WALL SHELVING ON UNISTRUT (5 TIER U.O.N.)	7 (1F4.05)
12	[Symbol]	WATER PURIFIER - OWNER FURNISHED, OWNER INSTALLED	X
13	[Symbol]	MARINE EDGE	X
14	[Symbol]	MARKERBOARD - REFER TO ARCHITECTURALS - SHOWN FOR COORDINATION ONLY	X
15	[Symbol]	PASS THRU SLEEVE - 8"ø INSTALLED AT 24" A.F.F. U.O.N.	9 (1F4.05)
16	[Symbol]	ST. STL. WIRE SHELVING UNIT (5-TIER U.O.N.)	9 (1F4.05)
17	[Symbol]	ADJUSTABLE ST. STL. WIRE WALL SHELVING (2 TIER U.O.N.)	9 (1F4.05)
18	[Symbol]	LASER CURTAINS AND TRACK	8 (1F4.03)
19	[Symbol]	SAFETY STATION WITH EYEWASH UNIT	8 (1F4.03)
20	[Symbol]	MOBILE WORK STATION - TYPE A (HEAVY DUTY)	6 (1F4.05)
21	[Symbol]	MOBILE WORK STATION - TYPE B (HEAVY DUTY, NO SHELVES)	6 (1F4.05)
22	[Symbol]	MOBILE WORK STATION - TYPE C ("h" FRAME)	1 (1F4.04)
23	[Symbol]	MOBILE WORK STATION - TYPE D ("h"-FRAME, NO SHELVES)	1 (1F4.04)
24	[Symbol]	TALL STORAGE CABINET - SEE CASEWORK MENU	X
25	[Symbol]	CHEMICAL FUME HOOD - SEE EXHAUST SCHEDULE	1 (1F4.05)
26	[Symbol]	OWNER FURNISHED, OWNER INSTALLED EQUIPMENT	X
27	[Symbol]	EPOXY RESIN SINK - SEE SINK SCHEDULE	5 (1F4.05)
28	[Symbol]	CUP SINK - SEE SINK SCHEDULE	6 (1F4.05)
29	[Symbol]	FLOOR DRAIN (SHOWN FOR COORDINATION ONLY)	X
30	[Symbol]	FLOOR SINK (SHOWN FOR COORDINATION ONLY)	X
31	[Symbol]	LEG POST UNDER BENCH/TABLE TOP	X
32	[Symbol]	STAINLESS STEEL SCULLERY SINK	2-3 (1F4.04)

**LABORATORY BENCHTOP LEGEND**

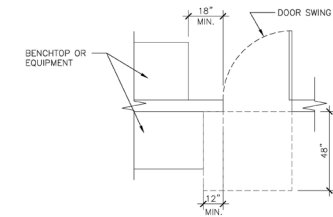
**NOTES:**

- ALL BENCH/TABLE/MOBILE WORK STATION TOPS TO BE 1" THICK EPOXY RESIN (UNLESS OTHERWISE NOTED)
- +30", +34", +36" INDICATES BENCHTOP HEIGHT ABOVE FINISH FLOOR
- ALL BENCH/TABLE/MOBILE WORK STATION TOPS SHALL BE +36" HIGH (UNLESS OTHERWISE NOTED)

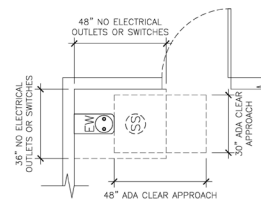
E EPOXY RESIN BENCHTOP

T PHENOLIC RESIN BENCHTOP

**INTERIOR DOOR CLEARANCES (ADA COMPLIANT)**



**ELECTRICAL AND ADA CLEARANCES AT SS/EW**



**ELECTRICAL SYMBOLS**

[Symbol]	110V/30A/1ø SINGLE RECEPTACLE	[Symbol]	EXTERNAL DISCONNECT
[Symbol]	110V/20A/1ø DUPLEX RECEPTACLE	[Symbol]	JUNCTION BOX
[Symbol]	120V/208V/1ø RECEPTACLE	[Symbol]	ELECTRICAL PANEL
[Symbol]	208V/3ø RECEPTACLE	[Symbol]	WEATHERPROOF OUTLET
[Symbol]	SPECIAL POWER RECEPTACLE	[Symbol]	STANDBY POWER
[Symbol]	DOUBLE DUPLEX RECEPTACLE	[Symbol]	TWIST LOCK
[Symbol]	SURFACE RACEWAY	[Symbol]	INSTRUMENT GROUND
[Symbol]	BUSWAY-(BASED ON STARLINE)	[Symbol]	DATA OUTLET
[Symbol]	FLOOR MTD. DUPLEX RECEPTACLE	[Symbol]	TELEPHONE/DATA OUTLET
[Symbol]	FLOOR MTD. DATA BOX	[Symbol]	TELEPHONE OUTLET
[Symbol]	CEILING MTD. DUPLEX RECEPTACLE		



PORTLAND  
SEATTLE  
LOS ANGELES  
WASHINGTON DC  
NEW YORK

925 Fourth Avenue  
Suite 2400  
Seattle, WA 98104  
T 206 623 9414  
F 206 623 7103  
www.zgf.com

**Consultants**

STRUCTURAL  
KPF CONSULTING ENGINEERS  
111 5th AVENUE, SUITE 2500  
PORTLAND, OR 97204-3628

MECHANICAL/ELECTRICAL  
ENGINEER  
AFFILIATED ENGINEERS NW, INC  
1601 FIFTH AVENUE, SUITE 1400  
SEATTLE, WA 98101

LABORATORY DESIGN  
RESEARCH FACILITIES DESIGN  
3065 FIFTH AVENUE, SUITE 400  
SAN DIEGO, CA 92103

CIVIL ENGINEER  
KPF CONSULTING ENGINEERS  
1601 FIFTH AVENUE, SUITE 1600  
SEATTLE, WA 98101

**Revisions**

**NANO ENGINEERING AND SCIENCES**

UNIV OF WASHINGTON  
1701 NE GRANT LN  
SEATTLE, WA

**Drawing Title**

LABORATORY FURNISHINGS  
GENERAL NOTES,  
SYMBOLS LEGEND,  
AND ABBREVIATIONS

Date: 01.15.2016

ZGF Job No: 040359

UW Project No: 204878

UW FACNUM No: none

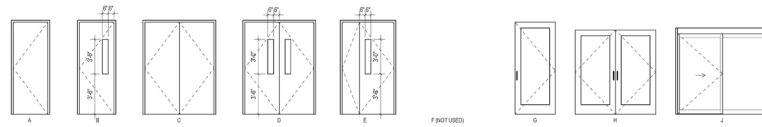
UW CPO Contact: Eric McArthur

**Drawing No.**

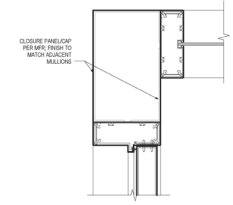
**LF1.00-T12**

**DR-7 TI-2 PERMIT SET**

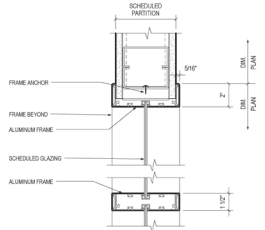
DOOR SCHEDULE TI-2														
DOOR NUMBER	ROOM/NAME	PAN	WTH	HSHT	TYPE	FIRE RATING	PANEL MATERIAL	CLASS	MATERIAL	HEAD	JAMB	THRESHOLD	HARDWARE	NOTES
LEVEL 02														
0810	PREP	FR	4'-0"	8'-0"	E	--	MDO	0-2	HM	2048.06.10	2048.06.10	HW1	2'-0" AND 1'-0" LEAVES CR	
0811	PREP	FR	4'-0"	8'-0"	A	--	MDO	0-2	HM	2048.06.10	2048.06.10	HW1	2'-0" AND 1'-0" LEAVES CR	
0814	LAB	FR	3'-0"	8'-0"	A	--	MDO	0-2	HM	2048.06.10	2048.06.10	HW1	CR	
0816	LAB	FR	4'-0"	8'-0"	C	--	MDO	0-2	HM	2048.06.10	2048.06.10	HW1	CR	
0818	LAB	FR	3'-0"	8'-0"	A	--	MDO	0-2	HM	2048.06.10	2048.06.10	HW1	CR	
0819	LAB	FR	4'-0"	8'-0"	C	--	MDO	0-2	HM	2048.06.10	2048.06.10	HW1	CR	
081C1	LAB EQUIPMENT ROOM	FR	8'-0"	8'-0"	C	--	MDO	0-2	HM	2048.06.10	2048.06.10	HW1	CR	
081C2	LAB EQUIPMENT ROOM	FR	8'-0"	8'-0"	B	--	MDO	0-2	HM	2048.06.10	2048.06.10	HW1	CR	
081E1	PUMP ROOM	FR	3'-0"	8'-0"	A	--	PMF	0-2	HM	2048.06.10	2048.06.10	HW1	CR	
081F1	PREP	FR	3'-0"	8'-0"	A	--	MDO	0-2	HM	2048.06.10	2048.06.10	HW1	CR	
082A1	CTL RM	FR	3'-0"	8'-0"	A	--	MDO	0-2	HM	2048.06.10	2048.06.10	HW1	CR	
082B1	CTL RM	FR	3'-0"	8'-0"	A	--	MDO	0-2	HM	2048.06.10	2048.06.10	HW1	CR	
082S1	NONULTRAVIOLET LAB	FR	8'-0"	8'-0"	C	--	MDO	0-2	HM	2048.06.10	2048.06.10	HW1	CR	
081	OFFICE	FR	3'-0"	8'-0"	A	--	MDO	0-2	HM	2048.06.10	2048.06.10	HW1	CR	
0811	LAB EQUIPMENT ROOM	FR	8'-0"	8'-0"	D	--	MDO	0-2	HM	2048.06.10	2048.06.10	HW1	CR	
0812	PUMP ROOM	FR	3'-0"	8'-0"	A	--	PMF	0-2	HM	2048.06.10	2048.06.10	HW1	CR	
0813	LAB EQUIPMENT ROOM	FR	3'-0"	8'-0"	A	--	MDO	0-2	HM	2048.06.10	2048.06.10	HW1	CR	
0814	LAB EQUIPMENT ROOM	FR	3'-0"	8'-0"	A	--	MDO	0-2	HM	2048.06.10	2048.06.10	HW1	CR	
0815	PREP	FR	3'-0"	8'-0"	A	--	MDO	0-2	HM	2048.06.10	2048.06.10	HW1	CR	
0817	PREP	FR	3'-0"	8'-0"	A	--	MDO	0-2	HM	2048.06.10	2048.06.10	HW1	CR	
0818	OFFICE	FR	3'-0"	8'-0"	A	--	MDO	0-2	HM	2048.06.10	2048.06.10	HW1	CR	
0819	TECHNICAL LAB	FR	8'-0"	8'-0"	C	--	MDO	0-2	HM	2048.06.10	2048.06.10	HW1	CR	
081C1	TECHNICAL LAB	FR	8'-0"	8'-0"	A	--	MDO	0-2	HM	2048.06.10	2048.06.10	HW1	CR	
081C2	LAB EQUIPMENT ROOM	FR	8'-0"	8'-0"	C	--	MDO	0-2	HM	2048.06.10	2048.06.10	HW1	CR	
081E1	LAB EQUIPMENT ROOM	FR	8'-0"	8'-0"	A	--	PMF	0-2	HM	2048.06.10	2048.06.10	HW1	CR	
081F1	OFFICE	FR	3'-0"	8'-0"	A	--	MDO	0-2	HM	2048.06.10	2048.06.10	HW1	CR	
081G1	LAB EQUIPMENT ROOM	FR	8'-0"	8'-0"	A	--	MDO	0-2	HM	2048.06.10	2048.06.10	HW1	CR	
081H1	LAB EQUIPMENT ROOM	FR	8'-0"	8'-0"	A	--	MDO	0-2	HM	2048.06.10	2048.06.10	HW1	CR	
081I1	LAB EQUIPMENT ROOM	FR	8'-0"	8'-0"	A	--	MDO	0-2	HM	2048.06.10	2048.06.10	HW1	CR	
081J1	LAB EQUIPMENT ROOM	FR	8'-0"	8'-0"	A	--	MDO	0-2	HM	2048.06.10	2048.06.10	HW1	CR	
081K1	LAB EQUIPMENT ROOM	FR	8'-0"	8'-0"	A	--	MDO	0-2	HM	2048.06.10	2048.06.10	HW1	CR	
081L1	LAB EQUIPMENT ROOM	FR	8'-0"	8'-0"	A	--	MDO	0-2	HM	2048.06.10	2048.06.10	HW1	CR	
081M1	LAB EQUIPMENT ROOM	FR	8'-0"	8'-0"	A	--	MDO	0-2	HM	2048.06.10	2048.06.10	HW1	CR	
081N1	LAB EQUIPMENT ROOM	FR	8'-0"	8'-0"	A	--	MDO	0-2	HM	2048.06.10	2048.06.10	HW1	CR	
081O1	LAB EQUIPMENT ROOM	FR	8'-0"	8'-0"	A	--	MDO	0-2	HM	2048.06.10	2048.06.10	HW1	CR	
081P1	LAB EQUIPMENT ROOM	FR	8'-0"	8'-0"	A	--	MDO	0-2	HM	2048.06.10	2048.06.10	HW1	CR	
081Q1	LAB EQUIPMENT ROOM	FR	8'-0"	8'-0"	A	--	MDO	0-2	HM	2048.06.10	2048.06.10	HW1	CR	
081R1	LAB EQUIPMENT ROOM	FR	8'-0"	8'-0"	A	--	MDO	0-2	HM	2048.06.10	2048.06.10	HW1	CR	
081S1	LAB EQUIPMENT ROOM	FR	8'-0"	8'-0"	A	--	MDO	0-2	HM	2048.06.10	2048.06.10	HW1	CR	
081T1	LAB EQUIPMENT ROOM	FR	8'-0"	8'-0"	A	--	MDO	0-2	HM	2048.06.10	2048.06.10	HW1	CR	
081U1	LAB EQUIPMENT ROOM	FR	8'-0"	8'-0"	A	--	MDO	0-2	HM	2048.06.10	2048.06.10	HW1	CR	
081V1	LAB EQUIPMENT ROOM	FR	8'-0"	8'-0"	A	--	MDO	0-2	HM	2048.06.10	2048.06.10	HW1	CR	
081W1	LAB EQUIPMENT ROOM	FR	8'-0"	8'-0"	A	--	MDO	0-2	HM	2048.06.10	2048.06.10	HW1	CR	
081X1	LAB EQUIPMENT ROOM	FR	8'-0"	8'-0"	A	--	MDO	0-2	HM	2048.06.10	2048.06.10	HW1	CR	
081Y1	LAB EQUIPMENT ROOM	FR	8'-0"	8'-0"	A	--	MDO	0-2	HM	2048.06.10	2048.06.10	HW1	CR	
081Z1	LAB EQUIPMENT ROOM	FR	8'-0"	8'-0"	A	--	MDO	0-2	HM	2048.06.10	2048.06.10	HW1	CR	
LEVEL 03														
380A1	TOILET	FR	3'-0"	8'-0"	A	--	MDO	0-2	HM	2048.06.10	2048.06.10	HW1	HW15	
380B1	TOILET	FR	3'-0"	8'-0"	A	--	MDO	0-2	HM	2048.06.10	2048.06.10	HW1	HW15	
380C1	RESEARCH LAB	FR	7'-0" 10"	7'-0"	J	--	AL	0-2	AL	1304.06.10	1304.06.10	HW17	SLDRNG AD / PUSH BUTTON BREAK AWAY / CR LOCAL ALARM	
380D1	RESEARCH LAB	FR	7'-0" 10"	7'-0"	J	--	AL	0-2	AL	1304.06.10	1304.06.10	HW17	SLDRNG AD / PUSH BUTTON BREAK AWAY / CR LOCAL ALARM	
380E1	RESEARCH LAB	FR	7'-0" 10"	7'-0"	J	--	AL	0-2	AL	1304.06.10	1304.06.10	HW17	SLDRNG AD / PUSH BUTTON BREAK AWAY / CR LOCAL ALARM	
380F1	LAB EQUIPMENT ROOM	FR	3'-0"	8'-0"	D	--	MDO	0-2	HM	2048.06.10	2048.06.10	HW1	CR	
380G1	LAB EQUIPMENT ROOM	FR	3'-0"	8'-0"	A	--	MDO	0-2	HM	2048.06.10	2048.06.10	HW1	CR	
380H1	LAB EQUIPMENT ROOM	FR	3'-0"	8'-0"	A	--	MDO	0-2	HM	2048.06.10	2048.06.10	HW1	CR	
380I1	LAB EQUIPMENT ROOM	FR	3'-0"	8'-0"	A	--	MDO	0-2	HM	2048.06.10	2048.06.10	HW1	CR	
380J1	HOLDIET	FR	8'-0"	8'-0"	D	MS	PMF	0-2	HM	2048.06.10	2048.06.10	HW1	HW15	
380K1	CONFERENCE ROOM	FR	3'-0"	8'-0"	D	--	MDO	0-2	AL	2048.06.10	2048.06.10	HW20	CR	
380L1	CONFERENCE ROOM	FR	3'-0"	8'-0"	D	--	MDO	0-2	AL	2048.06.10	2048.06.10	HW20	CR	
380M1	CONFERENCE ROOM	FR	3'-0"	8'-0"	D	--	MDO	0-2	AL	2048.06.10	2048.06.10	HW20	CR	
380N1	CONFERENCE ROOM	FR	3'-0"	8'-0"	D	--	MDO	0-2	AL	2048.06.10	2048.06.10	HW20	CR	
380O1	CONFERENCE ROOM	FR	3'-0"	8'-0"	D	--	MDO	0-2	AL	2048.06.10	2048.06.10	HW20	CR	
380P1	CONFERENCE ROOM	FR	3'-0"	8'-0"	D	--	MDO	0-2	AL	2048.06.10	2048.06.10	HW20	CR	
380Q1	CONFERENCE ROOM	FR	3'-0"	8'-0"	D	--	MDO	0-2	AL	2048.06.10	2048.06.10	HW20	CR	
380R1	CONFERENCE ROOM	FR	3'-0"	8'-0"	D	--	MDO	0-2	AL	2048.06.10	2048.06.10	HW20	CR	
380S1	CONFERENCE ROOM	FR	3'-0"	8'-0"	D	--	MDO	0-2	AL	2048.06.10	2048.06.10	HW20	CR	
380T1	CONFERENCE ROOM	FR	3'-0"	8'-0"	D	--	MDO	0-2	AL	2048.06.10	2048.06.10	HW20	CR	
380U1	CONFERENCE ROOM	FR	3'-0"	8'-0"	D	--	MDO	0-2	AL	2048.06.10	2048.06.10	HW20	CR	
380V1	CONFERENCE ROOM	FR	3'-0"	8'-0"	D	--	MDO	0-2	AL	2048.06.10	2048.06.10	HW20	CR	
380W1	CONFERENCE ROOM	FR	3'-0"	8'-0"	D	--	MDO	0-2	AL	2048.06.10	2048.06.10	HW20	CR	
380X1	CONFERENCE ROOM	FR	3'-0"	8'-0"	D	--	MDO	0-2	AL	2048.06.10	2048.06.10	HW20	CR	
380Y1	CONFERENCE ROOM	FR	3'-0"	8'-0"	D	--	MDO	0-2	AL	2048.06.10	2048.06.10	HW20	CR	
380Z1	CONFERENCE ROOM	FR	3'-0"	8'-0"	D	--	MDO	0-2	AL	2048.06.10	2048.06.10	HW20	CR	
LEVEL 04														
480A1	TOILET	FR	3'-0"	8'-0"	A	--	MDO	0-2	HM	2048.06.10	2048.06.10	HW1	HW15	
480B1	RESEARCH LAB	FR	7'-0" 10"	7'-0"	J	--	AL	0-2	AL	1304.06.10	1304.06.10	HW17	SLDRNG AD / PUSH BUTTON BREAK AWAY / CR LOCAL ALARM	
480C1	RESEARCH LAB	FR	7'-0" 10"	7'-0"	J	--	AL	0-2	AL	1304.06.10	1304.06.10	HW17	SLDRNG AD / PUSH BUTTON BREAK AWAY / CR LOCAL ALARM	
480D1	RESEARCH LAB	FR	7'-0" 10"	7'-0"	J	--	AL	0-2	AL	1304.06.10	1304.06.10	HW17	SLDRNG AD / PUSH BUTTON BREAK AWAY / CR LOCAL ALARM	
480E1	LAB EQUIPMENT ROOM	FR	3'-0"	8'-0"	D	--	MDO	0-2	HM	2048.06.10	2048.06.10	HW1	CR	
480F1	LAB EQUIPMENT ROOM	FR	3'-0"	8'-0"	A	--	MDO	0-2	HM	2048.06.10	2048.06.10	HW1	CR	
480G1	LAB EQUIPMENT ROOM	FR	3'-0"	8'-0"	A	--	MDO	0-2	HM	2048.06.10	2048.06.10	HW1	CR	
480H1	PREP	FR	3'-0"	8'-0"	A	--	MDO	0-2	HM	2048.06.10	2048.06.10	HW1	CR	
480I1	TESSA CULTURE	FR	3'-0"	8'-0"	A	--	MDO	0-2	HM	2048.06.10	2048.06.10	HW1	CR	
480J1	TESSA CULTURE	FR	3'-0"	8'-0"	A	--	MDO	0-2	HM	2048.06.10	2048.06.10	HW1	CR	
480K1	TESSA CULTURE	FR	3'-0"	8'-0"	A	--	MDO	0-2	HM	2048.06.10	2048.06.10	HW1	CR	



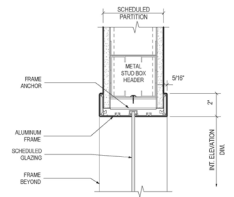
**1 DOOR TYPE SCHEDULE**  
 1/8" = 1'-0"



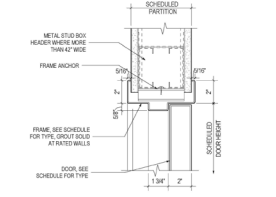
**14 DETAIL - CURTAIN WALL CORNER / DOOR JAMB**  
 3/4" = 1'-0"



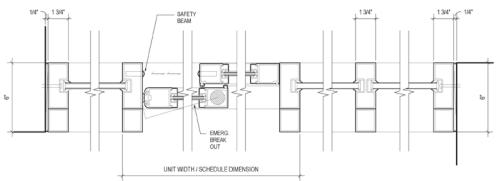
**11 ALUMINUM FRAME JAMB / MULLION - RELITE, TYP. T12**  
 3/4" = 1'-0"



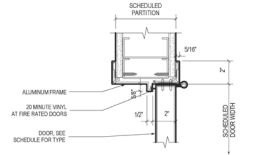
**6 ALUMINUM FRAME HEAD, JAMB SIM - RELITE, TYP. T12**  
 3/4" = 1'-0"



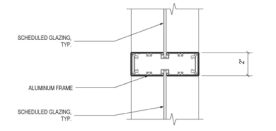
**2 FRAME HEAD - DOOR, TYP.**  
 3/4" = 1'-0"



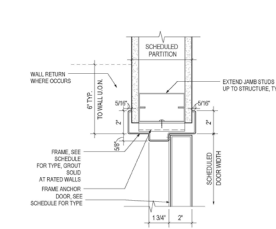
**16 GLAZED WALL / SLIDING DOOR PLAN DETAILS T12**  
 3/4" = 1'-0"



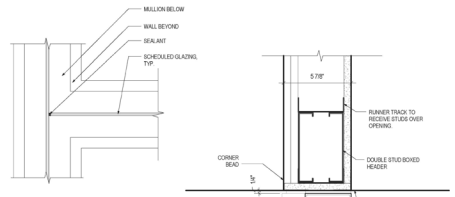
**13 ALUMINUM FRAME JAMB, TYP T12**  
 3/4" = 1'-0"



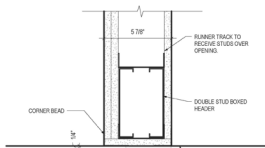
**7 ALUMINUM FRAME HORIZ. MULLION - RELITE T12**  
 3/4" = 1'-0"



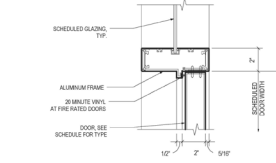
**3 FRAME JAMB - DOOR TYPICAL**  
 3/4" = 1'-0"



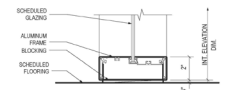
**14 GLAZED JOINT**  
 3/4" = 1'-0"



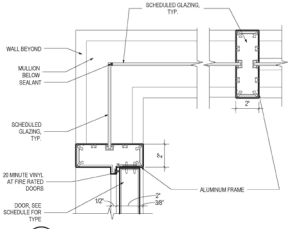
**13 SLIDING DOOR SECTION DETAIL T12**  
 3/4" = 1'-0"



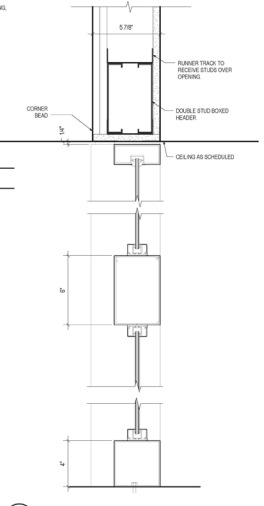
**8 ALUMINUM FRAME HEAD, JAMB SIM - RELITE, TYP T12**  
 3/4" = 1'-0"



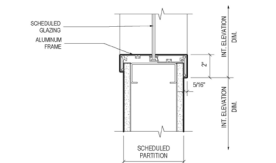
**9 ALUMINUM FRAME SILL - RELITE**  
 3/4" = 1'-0"



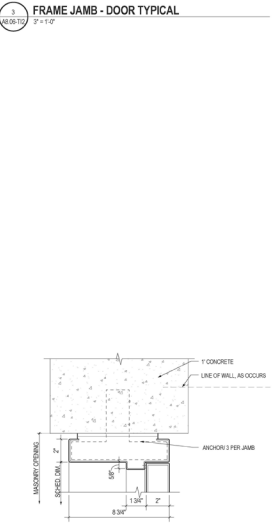
**15 GLAZED JOINT CORNER**  
 3/4" = 1'-0"



**18 SECTION @ SIDELIGHTS T12**  
 3/4" = 1'-0"



**10 ALUMINUM FRAME SILL - RELITE ABOVE WALL**  
 3/4" = 1'-0"



**5 FRAME JAMB - CONCRETE WALL, TYP**  
 3/4" = 1'-0"

2/10/2016 3:43:36 PM